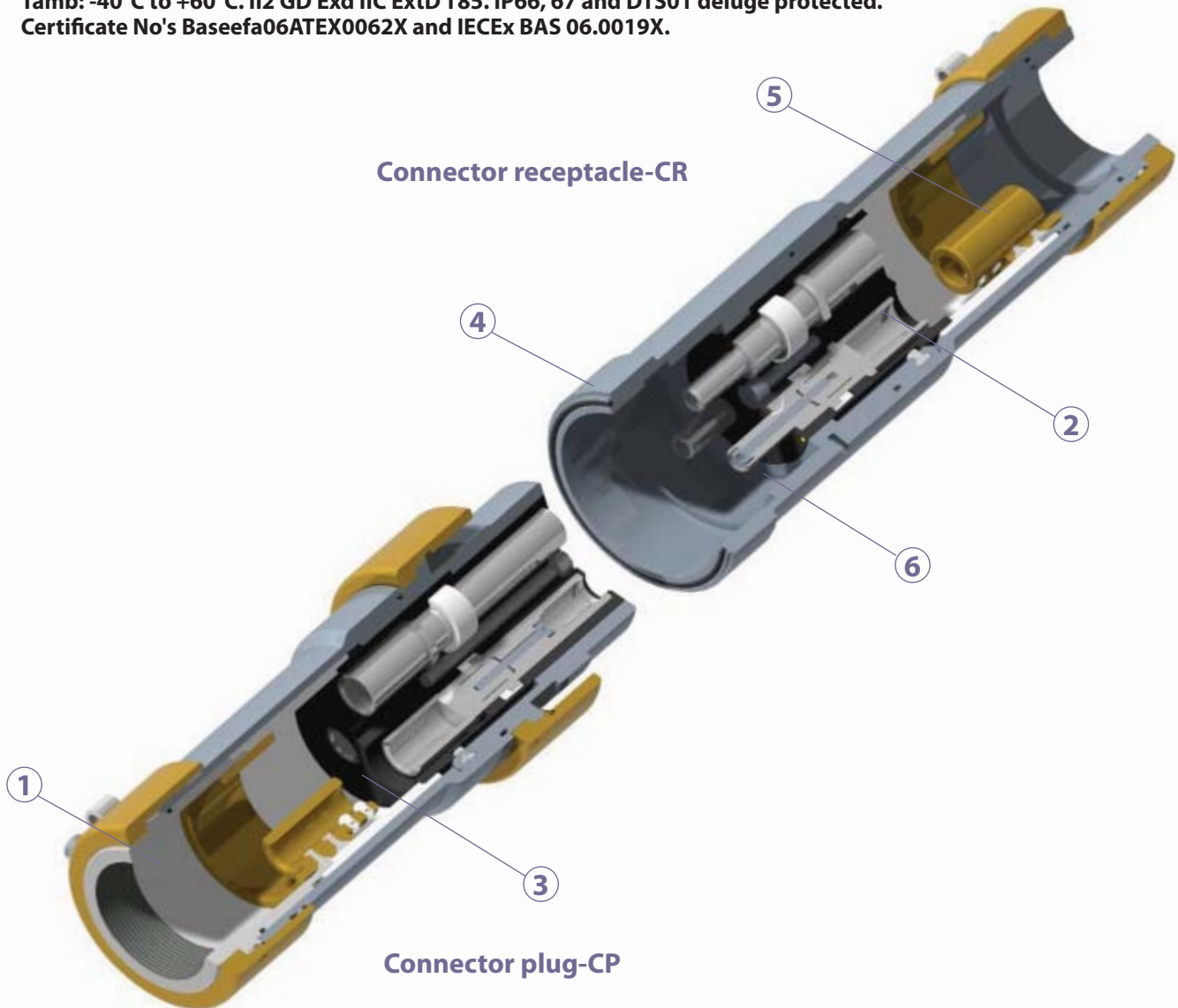
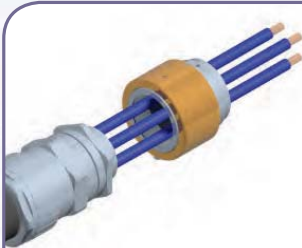


Tamb: -40°C to +60°C. II2 GD Exd IIC ExtD T85. IP66, 67 and DTS01 deluge protected.  
Certificate No's Baseefa06ATEX0062X and IECEx BAS 06.0019X.





1

### Running coupler

Allows the connector to be installed onto a pre-assembled cable gland.



4

### Acme thread at mating interface

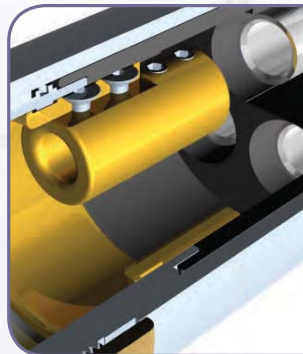
Unique ACME thread offers a smooth and quick fully mating action.



2

### Easy fieldwireable

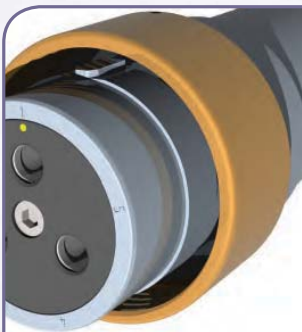
Insert assembled outside connector shell to assist wiring and allow greater flexibility.



5

### Internal earth

Internal earth fitted as standard. Size to suit cables earthing facility.



3

### Keying position

The unique visual 5 position insert keying system along with the integral machined keyway prevents contact damage and ensures safe use by eliminating the possibility of misconnection of adjacent circuits.



6

### Multilam technology

Tried and tested multiple high contact force, low resistance multilams used in all contacts.